

2715

STANDARD REFERENCE FORCE TRANSDUCER TENSION / COMPRESSION

- Standard reference force transducer specially designed according to the norm ISO 376⁽¹⁾ (Class "1", "05" and "00")
- Broad range of capacities
- Tension and compression
- Compact design
- Complete range of load accessories
- Protection: IP67
- Material : Nickel plated alloy steel
- Also available with RS-232C or RS-485 output (option)



Model 2715

AVAILABLE CAPACITIES 20 - 30 - 50 - 75 - 100 kN

	Class	1	05	00
Hysteresis		$\leq \pm 0.30$	$\leq \pm 0.15$	$\leq \pm 0.07$
Repeatability with rotation (reproducibility)		$\leq \pm 0.20$	$\leq \pm 0.10$	$\leq \pm 0.05$
Repeatability without rotation (repeatability)	% RO ⁽²⁾	$\leq \pm 0.10$	$\leq \pm 0.05$	$\leq \pm 0.025$
Creep (over 30 minutes)		$\leq \pm 0.10$	$\leq \pm 0.05$	$\leq \pm 0.025$
Return to zero		$\leq \pm 0.05$	$\leq \pm 0.025$	$\leq \pm 0.012$
Reference temperature		+20		
Compensated temperature range	°C	-10 .. +45		
Service temperature range		-30 .. +70		
Storage temperature range		-50 .. +85		
Temperature coefficient on sensitivity	% RO / °C	$\leq \pm 0.035$	$\leq \pm 0.035$	$\leq \pm 0.015$
Temperature coefficient on zero	% FS ⁽³⁾ / °C	$\leq \pm 0.03$	$\leq \pm 0.03$	$\leq \pm 0.023$
Sensitivity	mV/V	2		
Time of stabilization after power excitation supply	s	200...600		
Input resistance	Ω	350 \pm 3		
Output resistance	Ω	350 \pm 2		
Insulation resistance	M Ω	> 5000		
Nominal excitation voltage	V	10		
Maximum excitation voltage	V	15		
Service load		100		
Limit load	% FS	110		
Breaking load		> 300		

⁽¹⁾ The class G0,5 of the norm DIN 51301 (D), the class 0 of the norm NFA 03-510 (F), the class 0 of the norm NBN X07-001 (B) and the class 0,5 of the norm EN 10002-3 are equivalent with the class 05 of the norm ISO376.

⁽²⁾ RO is the rated output (i.e.: measured value). The mentioned values are only valid if RO \geq 20% of full scale).

⁽³⁾ FS is the full scale of the force transducer.

LOAD CELL

model 2715 alloy steel

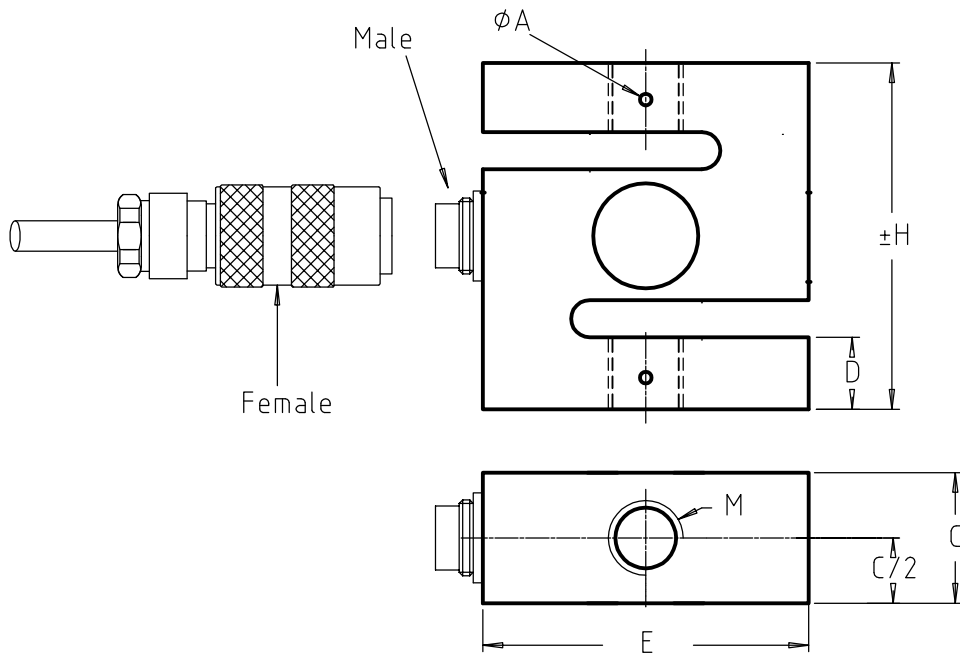
TENSION-COMPRESSION

Range (20 - 200 kN) IP67
(2 - 20 t.)

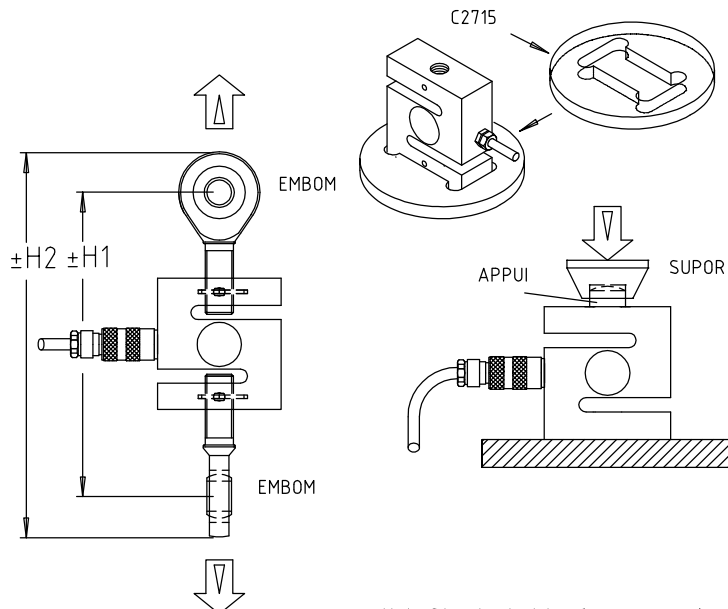
Cable length : See table



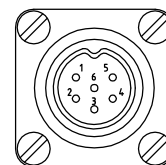
EN 10002



CAPACITIES	ϕA	H	C	D	E	M	H1	H2	Cable	Weight	Max.deflexion
20-50 kN	4	116	38	30	98	M24x2	238	302	3 m	2.6 kg	0.35 mm
75-100 kN	6	130	56	33	118	M36x3	318	402	6 m	5.2 kg	0.60 mm
150-200 kN	8	155	67	45	146	M45x3	360	470	10 m	9 kg	0.70 mm



FEMALE-MALE CONNECTOR DIN 45322



- CONTACT N°
- 1 Excitation - Yellow
 - 2 Output + Green
 - 3 Output - White
 - 4 Excitation + Brown
 - 5 Sense - Grey
 - 6 Sense + Pink

Shield not connected to transducer

Note: Standard wiring for compression