

5062-5065

**STANDARD REFERENCE FORCE TRANSDUCER
TENSION / COMPRESSION WITH MECHANICAL STOPS**

- Standard reference force transducer specially designed according to the norm ISO 376⁽¹⁾ (Class "1", "05" and "00")
- Broad range of capacities
- With mechanical stops
- Tension and compression
- Compact design
- Complete range of load accessories
- Protection: IP54
- Material : Aluminium (5062) or nickel plated steel (5065)
- Also available with RS-232C or RS-485 output (option)



Model 5065 – 10 kN

AVAILABLE CAPACITIES :

5062 : 100 - (150) - 200 - 300 - 500 - (750) - 1000 - (1500) - 2000 - 3000 - 5000 N

5065 : (7.5) - 10 - 15 - 20 - 30 - 50 kN

	Class	1	05	00
Hysteresis		≤ ± 0.30	≤ ± 0.15	≤ ± 0.07
Repeatability with rotation (reproducibility)		≤ ± 0.20	≤ ± 0.10	≤ ± 0.05
Repeatability without rotation (repeatability)	% RO ⁽²⁾	≤ ± 0.10	≤ ± 0.05	≤ ± 0.025
Creep (over 30 minutes)		≤ ± 0.10	≤ ± 0.05	≤ ± 0.025
Return to zero		≤ ± 0.05	≤ ± 0.025	≤ ± 0.012
Reference temperature		+20		
Compensated temperature range	°C	-10 .. +45		
Service temperature range		-30 .. +70		
Storage temperature range		-50 .. +85		
Temperature coefficient on sensitivity	% RO / °C	≤ ± 0.035	≤ ± 0.035	≤ ± 0.015
Temperature coefficient on zero	% FS ⁽³⁾ / °C	≤ ± 0.03	≤ ± 0.03	≤ ± 0.023
Sensitivity	mV/V	2		
Time of stabilization after power excitation supply	s	200...600		
Input resistance	Ω	350 ± 3		
Output resistance	Ω	350 ± 2		
Insulation resistance	MΩ	> 5000		
Nominal excitation voltage	V	10		
Maximum excitation voltage	V	15		
Service load		100		
Limit load	% FS	500		
Breaking load		> 500		

⁽¹⁾ The class G0,5 of the norm DIN 51301 (D), the class 0 of the norm NFA 03-510 (F), the class 0 of the norm NBN X07-001 (B) and the class 0,5 of the norm EN 10002-3 are equivalent with the class 05 of the norm ISO376.

⁽²⁾ RO is the rated output (i.e.: measured value). The mentioned values are only valid if RO ≥ 20% of full scale).

⁽³⁾ FS is the full scale of the force transducer.

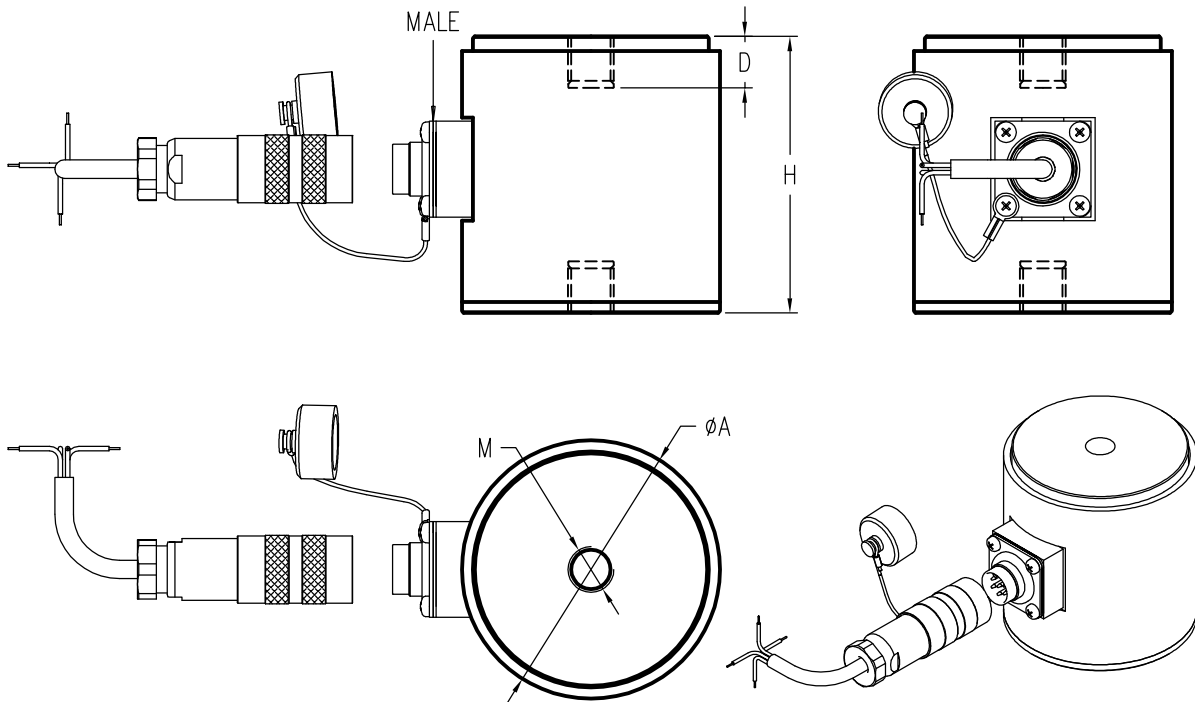
LOAD CELL

model 5062 aluminium
 model 5065 alloy steel



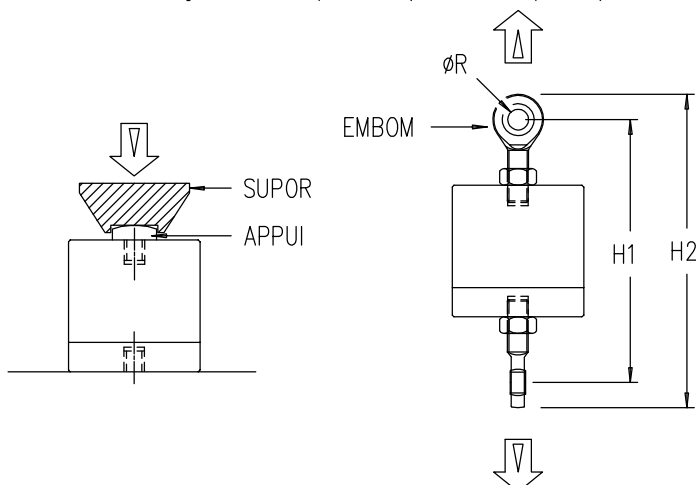
TENSION-COMPRESSION

Range 100 N-50 kN IP54
 (10 - 5000 kg)
 Cable length : 3 m

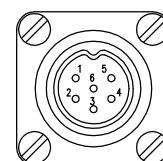


MODEL	CAPACITIES	ØA	H	D	H1	H2	M	ØR	Weight	Max.Deflexion
5062	100 - 2000 N *	70	75	12	134	163	M8	8	0.5 kg	0.2 - 0.5 mm
	3000 -5000 N *				157	191	M12	12		0.2 - 0.35 mm
5065	7.5 -10 kN *	70	100	20	170	216	M16	17	2.1 kg	0.25 - 0.35 mm
	15 -20 kN *	90								3.2 kg
	30 -50 kN		150	32	242	295	M20x1.5	20	5.3 kg	0.60 mm

* With integrated overload protection (tension & compression) to 500%



FEMALE-MALE CONNECTOR DIN 45322



CONTACT N°
 1 Excitation - Yellow
 2 Signal + Green
 3 Signal - White
 4 Excitation + Brown
 5 Sense - Grey
 6 Sense + Pink

Standard : Cable screen not connected to transducer
 Option f : Cable screen connected to transducer