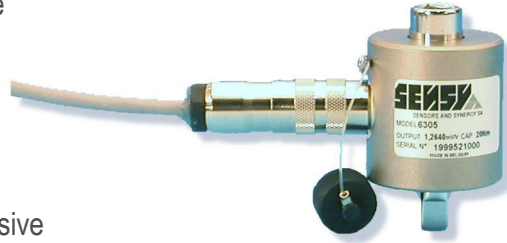


## 6305

## TORQUE METER FOR RATCHET WRENCH

- Non-rotating torque meter meant to be put between the ratchet and the wrench
- Broad range of capacities : from 50 Nm to 800 Nm
- Easy to install (standardized wrenches)
- Compact design
- Protection IP 65
- EEx ia IIC T4 / T6 version certified for use in explosive areas
- Available in high output signal
- Material: nickel plated steel



Model 6305 – 20 Nm

Model 6305 from SENSY are designed for following applications:

- Tightening torque control on ratchet wrench
- Tightening torque control on machines

### AVAILABLE CAPACITIES:

6305 : 50 - 100 - 300 - 800 Nm

Technical characteristics		
Accuracy class		0.25
Linearity error	% F.S.	< ± 0.25
Non-repeatability	% F.S.	< ± 0.1
Creep error over 30 min.	% F.S.	< ± 0.075
Return to Zero	% F.S.	< ± 0,025
Reference temperature	°C	23
Nominal temperature range	°C	- 10...+ 45
Service temperature range	°C	- 30...+ 70
Storage temperature range	°C	- 50...+ 85
Temperature coefficient of the sensitivity	% /10°C	< ± 0.05
Temperature coefficient of the Zero signal	% F.S./10°C	< ± 0.035
Nominal sensitivity	mV/V	1.5 - 2
Zero balance	mV/V	± 0.02
Sensitivity tolerance	%	< ± 0.2
Input/Output resistance	Ohm	350 ± 20
Insulation resistance	MOhm	> 5000
Nominal excitation voltage	V	5 to 10
Nominal range of excitation voltage	V	2...15
Safe load limit	% F.S.	150
Breaking load	% F.S.	300
Permissible dynamic loading	% F.S.	50

F.S.: full scale Specifications subject to change without notice

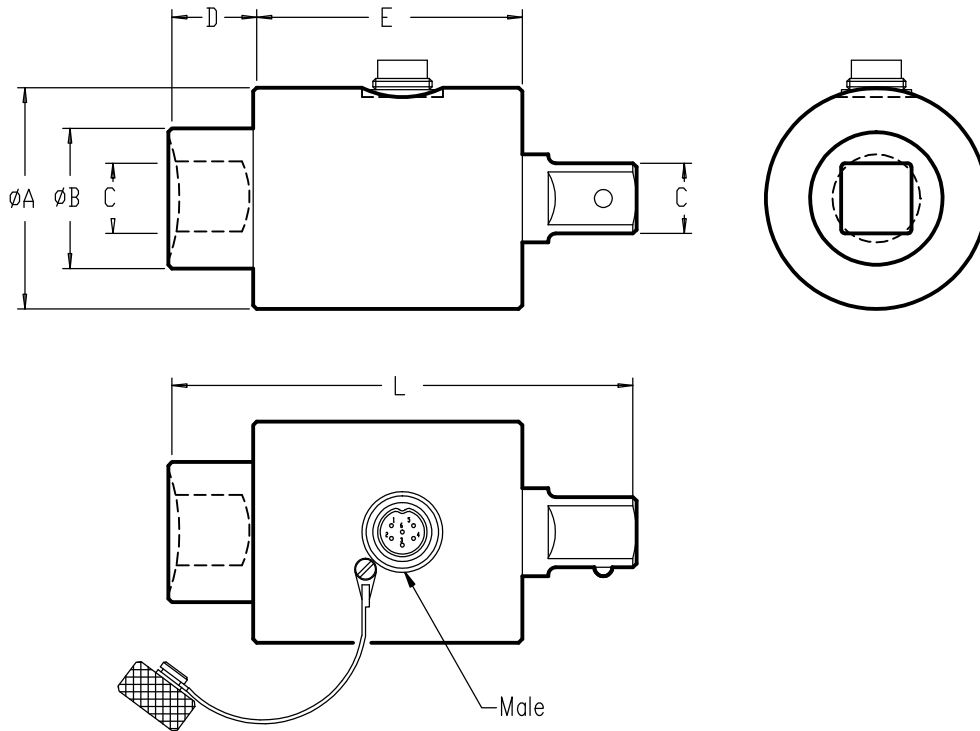
## STATIC TORQUEMETER

model 6305 alloy steel  
REACTION TORQUE TRANSDUCER

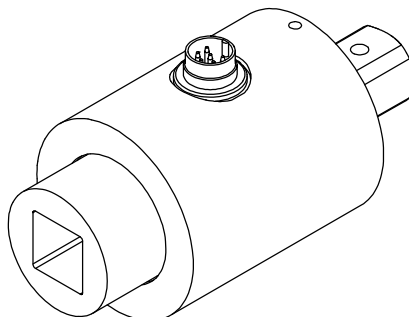
Range 50–800 Nm IP 65  
Cable length : 3 m Overload 150 %



ATEX CERTIFIED

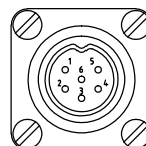


CAPACITIES	ØA	ØB	C	D	E	L
50 Nm	45	17.6	3/8"	10	47.5	75 mm
100 Nm	50	25	1/2"	16.5	73	127 mm /5"
300 Nm	60	38	3/4"	22	73	127 mm /5"
800 Nm	65	49	1"	30	100	203 mm /8"



CONNECTOR -CONNECTEUR DIN 45322

CONTACT N° 1 *Yellow* *Jaune* Excitation -  
4 *Brown* *Brun* Excitation +



2 *Green* *Vert* :Signal+ :Signal -  
3 *White* *Blanc* :Signal- :Signal +  
5 *Grey* *Gris* Calibration  
6 *Pink* *Rose* Calibration

Standard : Cable screen not connected to transducer  
Option f : Cable screen connected to transducer

9/10/2006